

**Statistical Trends in the Ecclesiastical Province of Canada**  
**By the Rt. Rev. Dr. Geoff Peddle**  
**June 9, 2015**

The following paper is updated from a paper submitted by me to the Province of Canada on September 14, 2013. That paper was itself an update to a paper submitted on August 7, 2012. For a detailed understanding of the methodology and implications of this current work, the reader is referred to these two references. This most recent document is based upon data provided to me by Mr. Charles Ferris on May 29, 2015.

The extension to the figures shown in this paper as compared to previous papers is limited due to the availability of sufficient data. A valid data point for a given year requires complete reporting from all dioceses in a province, as well as statistical data for that province. As can be seen in the figures below, such information was available for 2006 for all metrics used, and up to 2012 for baptisms and funerals. All available data are given in tables.

In this work I present four metrics used to measure public engagement with the Anglican Church of Canada: membership (as measured by parish reporting), infant baptism, marriages and funerals, which take place within the Church. All of these metrics are normalised with respect to the relevant statistics for the Canadian province in which the dioceses are located, so as to permit comparison of trends across dioceses of differing sizes.

This work further presents the so-called *index change*, which shows the percent change from the rates found in the first year for which sufficient data is available (either 1976 or 1986, depending on the metric employed). This is intended to give the reader a better idea of the change in engagement over time. It is notable that some indices, particularly for secondary aspects of membership, indicate little decrease over the time period studied. In the case of Anglican baptisms as a percentage of live births, Newfoundland and Labrador has actually seen an increased rate. This suggests that while *membership* in the traditional sense has declined, the Church remains relevant for significant numbers of people at crucial stages of their lives.

+Geoff

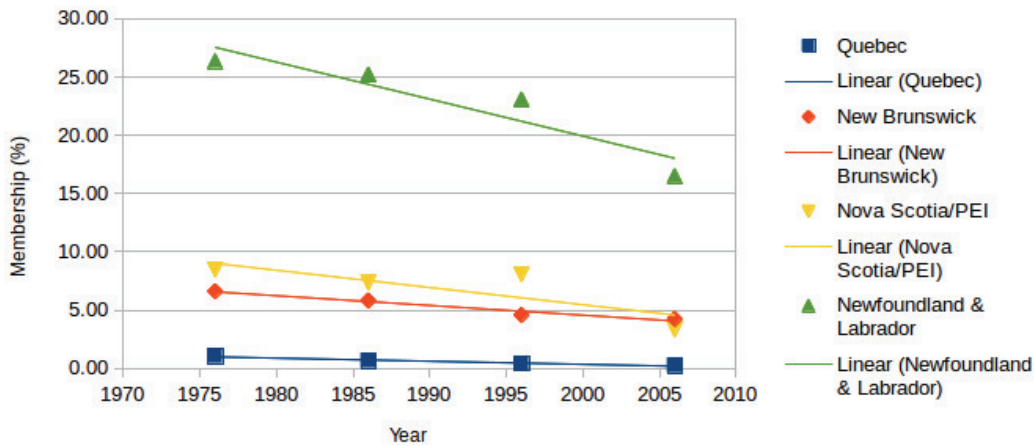
**Provincial Statistics from Statistics Canada and Provincial Statistics Offices**

<b>Population</b>	<b>1976</b>	<b>1986</b>	<b>1996</b>	<b>2006</b>	<b>2008</b>	<b>2010</b>	<b>2012</b>	<b>2014</b>
Quebec	6,234,445	6,532,460	7,138,795	7,546,131	7,773,378	7,929,396	8,084,800	8,214,700
New Brunswick	677,250	709,445	738,133	729,997	747,935	754,105	756,800	753,900
Nova Scotia and PEI	946,795	999,815	1,043,839	1,049,313	1,078,963	1,090,601	1,090,100	1,089,000
Newfoundland Labrador	557,720	568,350	551,790	505,469	507,612	511,057	526,900	527,000
<b>Live Births</b>	<b>1976</b>	<b>1986</b>	<b>1996</b>	<b>2006</b>	<b>2008</b>	<b>2010</b>	<b>2012</b>	<b>2014</b>
Quebec	96,342	84,634	85,226	81,939	87,870	88,250	88,311	88,250
New Brunswick	11,811	9788	8176	7030	7402	7373	7028	6826
Nova Scotia and PEI	14,762	14,286	12,267	9898	10,671	10,731	10,154	9,995
Newfoundland Labrador	11,130	8100	5747	4542	4898	4862	4552	4455
<b>Weddings</b>		<b>1986</b>	<b>1996</b>	<b>2006</b>	<b>2008</b>	<b>2010</b>	<b>2012</b>	<b>2014</b>
Quebec		33,083	23,968	21956	22053	23,199		
New Brunswick		4962	4366	3845	3624	3474		
Nova Scotia and PEI		7415	6316	5596	5452			
Newfoundland Labrador		3421	3194	2665	2706	2657		
<b>Deaths</b>	<b>1976</b>	<b>1986</b>	<b>1996</b>	<b>2006</b>	<b>2008</b>	<b>2010</b>	<b>2012</b>	<b>2014</b>
Quebec	43,011	46,892	52,341	54,242	57,112	58,350	58,859	60,800
New Brunswick	5203	5458	5896	6010	6450	6761	6466	6835
Nova Scotia and PEI	8050	8376	9019	9260	9421	10,039	9856	10,261
Newfoundland Labrador	3323	3540	3928	4493	4539	4760	4613	4855

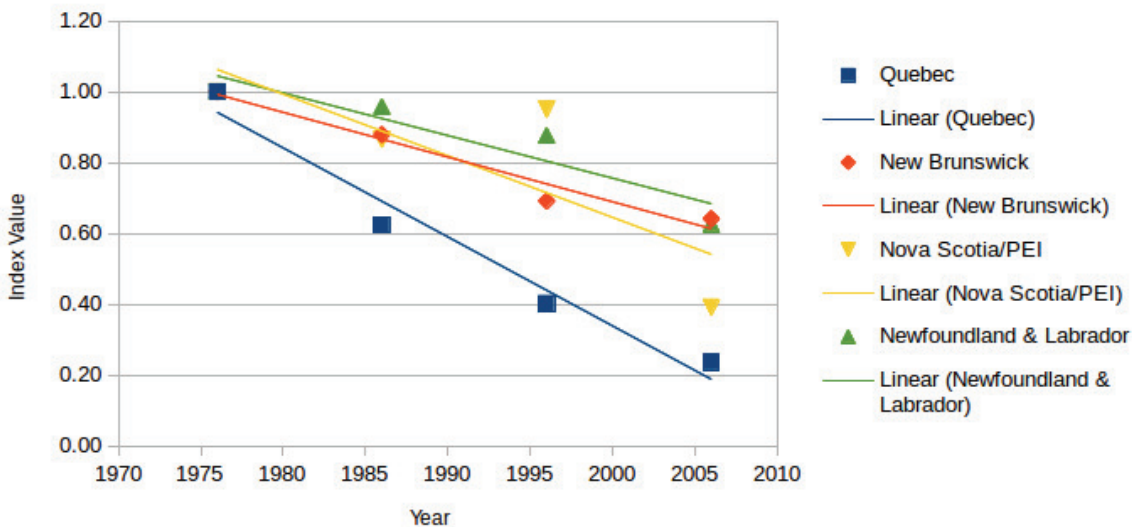
<b>Total Membership by Diocese</b>	<b>1976</b>	<b>1986</b>	<b>1996</b>	<b>2006</b>	<b>2007</b>	<b>2008</b>	<b>2009</b>	<b>2010</b>
Montreal	51,126	32,131	21,540	15,105	“	“	“	“
Quebec	14,316	10,633	8583	3576	“	“	“	“
Fredericton	44,864	41,329	33,833	31,032	31,032	20,052	“	“
Nova Scotia/PEI	80,289	73,429	84,151	34,854(GR)	19,019	31,243	18,369	33,807
Western Newfoundland	45,562	45,812	35,301	20,100	18,701	15,039	14,330	“
Central Newfoundland	40,637	34,720	33,884	21,432	“	“	“	“
Eastern Newfoundland & Labrador	60,868	62,865	58,235	41,907	38,884	“	“	32,684

### Anglican Membership by Province

As Percentage of Total Population



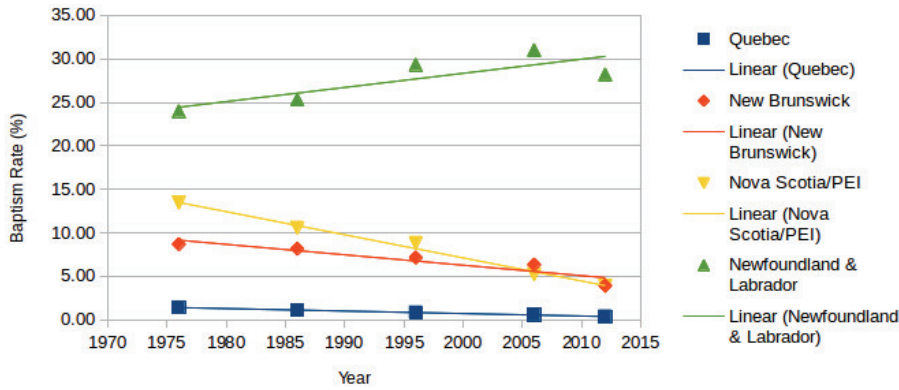
### Anglican Membership Index



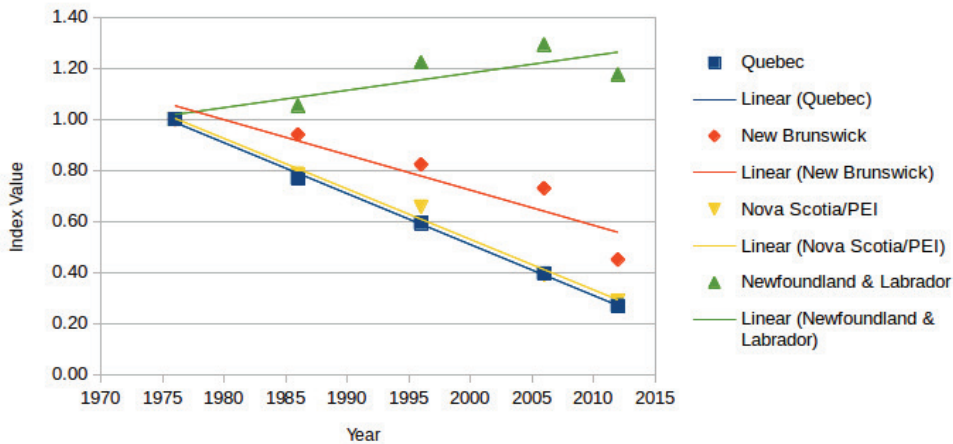
Baptisms by Diocese	1976	1986	1996	2006	2007	2008	2009	2010	2012	2013	2014
Montreal	1079	739	577	376	“	“	“	“	263	244	217
Quebec	290	183	141	84	“	“	“	“	75	81	
Fredericton	1027	800	585	446	446	299	“	“	275	218	174
Nova Scotia/PEI	1987	1511	1084	519	340	344	432	505	395	236	
Western Newfoundland	832	619	495	346	339	327	322	“	334	291	
Central Newfoundland	747	489	407	294	“	“	“	“	309	279	274
Eastern Newfoundland & Labrador	1092	941	784	769	706	“	“	“	641	574	

Baptism Rate

As Percentage of Live Births



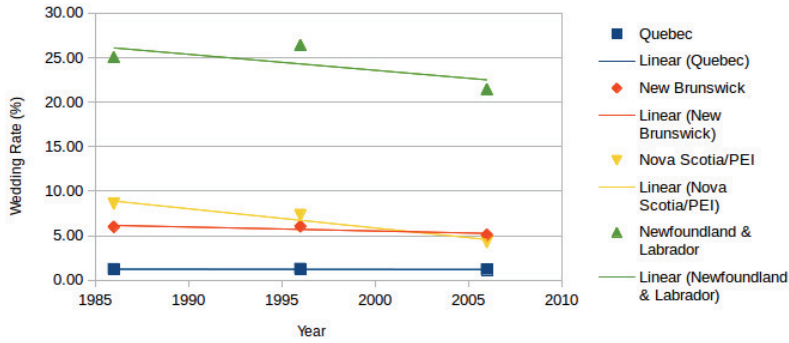
Baptism Index



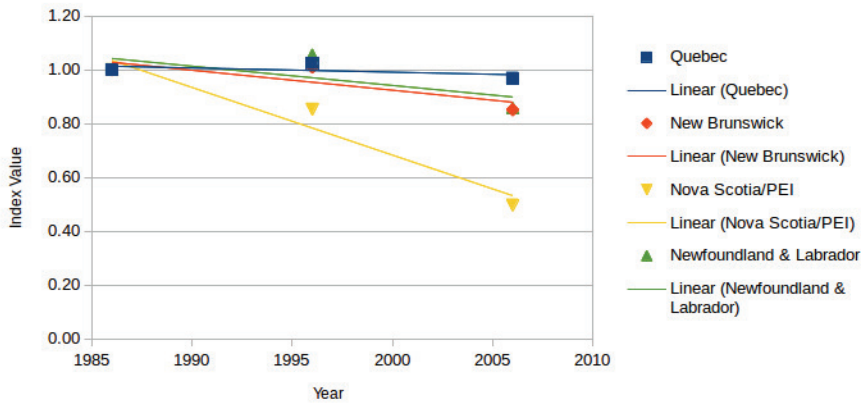
Weddings by Diocese	1976	1986	1996	2006	2007	2008	2009	2010	2012	2013	2014
Montreal	668	342	238	223	“	“	“	“	150	135	114
Quebec	135	64	63	38	“	“	“	“	29	29	
Fredericton	415	297	264	196	196	172	“	“	129	112	113
Nova Scotia/PEI	792	637	463	239	140	155	217	207	145	118	
Western Newfoundland	293	254	282	169	162	129	143	“	120	95	
Central Newfoundland	255	203	210	123	“	“	“	“	128	99	122
Eastern Newfoundland & Labrador	441	400	352	280	284	“	“	“	224	159	

Wedding Rate

As Percentage of Total Recognized Unions

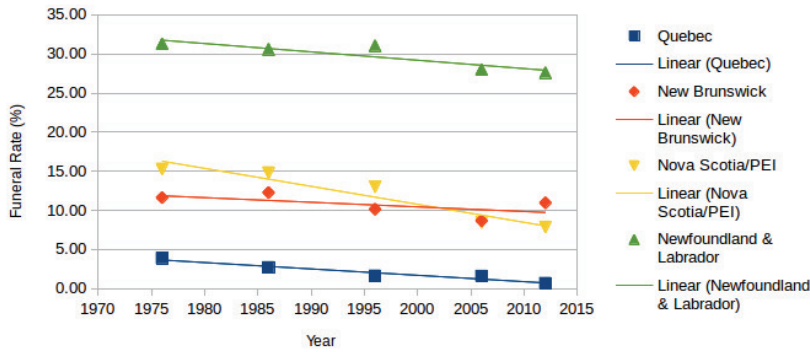


Wedding Index



Funerals by Diocese	1976	1986	1996	2006	2007	2008	2009	2010	2012	2013	2014
Montreal	1331	990	619	742	“	“	“	“	308	296	278
Quebec	335	276	227	122	“	“	“	“	93	88	
Fredericton	605	670	598	521	521	639	“	“	709	508	391
Nova Scotia/PEI	1231	1241	1173	781	392	577	922	967	775	688	
Western Newfoundland	235	328	349	348	341	372	340	“	375	391	
Central Newfoundland	335	274	337	371	“	“	“	“	367	379	381
Eastern Newfoundland & Labrador	470	482	534	540	545	122	“	“	532	491	

Funeral Rate  
As Percentage of Total Deaths



Funeral Index

