

Statistical Trends in the Ecclesiastical Province of Canada
By the Rt. Revd. Dr. Geoff Peddle and Rachel Robinson
May 2021

This report is an update of previous reports submitted by Rt. Revd. Dr. Geoff Peddle in 2012, 2013, and 2015. He and his colleagues collected all statistics from the years before 2019; the statistics from 2019 come directly from diocesan reports submitted in 2021.

Provincial statistics on population, live births, weddings and deaths are taken from Statistics Canada and provincial statistical records. The metrics that Rt. Revd. Peddle and I have used to indicate affiliation and participation in the Anglican Church are rates of membership, rates of baptisms, rates of weddings, and rates of funerals. This report begins in 1976, when the three dioceses in the Province of Newfoundland and Labrador were first established.

A word about the graphs. The absolute numbers are presented first, followed by a graph showing the relevant metric as a percentage of the total numbers for each province; beneath that is a second graph showing the index change for the metric by diocese and province (the percentage change of the metric by year). Provincial statistics on population, live births, and deaths are indexed against church membership figures and the number of baptisms and funerals to demonstrate decline or growth. For purposes of comparison, the figures from Statistics Canada are included on page 8.

In these graphs, the Dioceses of Montreal and Quebec are combined and comparisons are made with the Province of Quebec as a whole. Similarly, the Dioceses of Western Newfoundland, Central Newfoundland, and Eastern Newfoundland and Labrador are combined, and comparisons are made with the Province of Newfoundland and Labrador. In the case of the Diocese of Nova Scotia and Prince Edward Island, comparisons are made with both provinces combined. These combinations were necessary because the data from Statistics Canada on population, live births, and deaths is compiled by province and cannot be precisely matched against diocesan boundaries except in the case of the Diocese of Fredericton. Four statistical groupings emerge for such analysis: Quebec, New Brunswick, Nova Scotia and Prince Edward Island, and Newfoundland and Labrador. Church membership is thus compared against total provincial population, baptisms against total live births, and funerals against the total number of deaths.

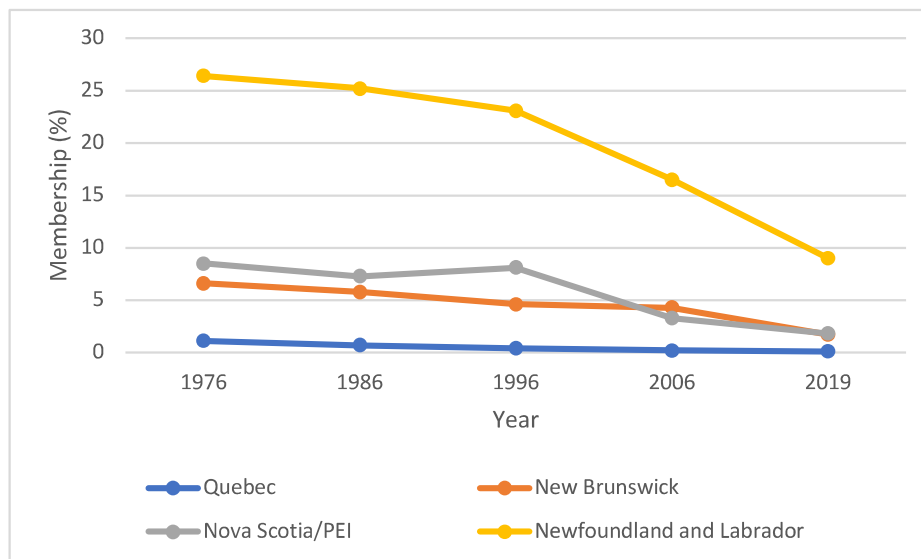
Statistics Canada stopped tracking the number of Canadian marriages some time ago. Provincial records for this data are patchy, and only Quebec and New Brunswick have updated numbers available. Therefore, I have been unable to update the graphs that compare number of weddings in the diocese to the general population. However, I have included the raw number of weddings in the diocese in 2019 and the two updated provincial figures I was able to find. I have also transferred the graphs from Rt. Revd. Peddle's 2015 report into this section to provide at least a rough idea of the arc of this metric.

This year's census will include data about current Canadian religious affiliation; comparing the data, when it comes out, to the information in this report could be a useful and interesting exercise.

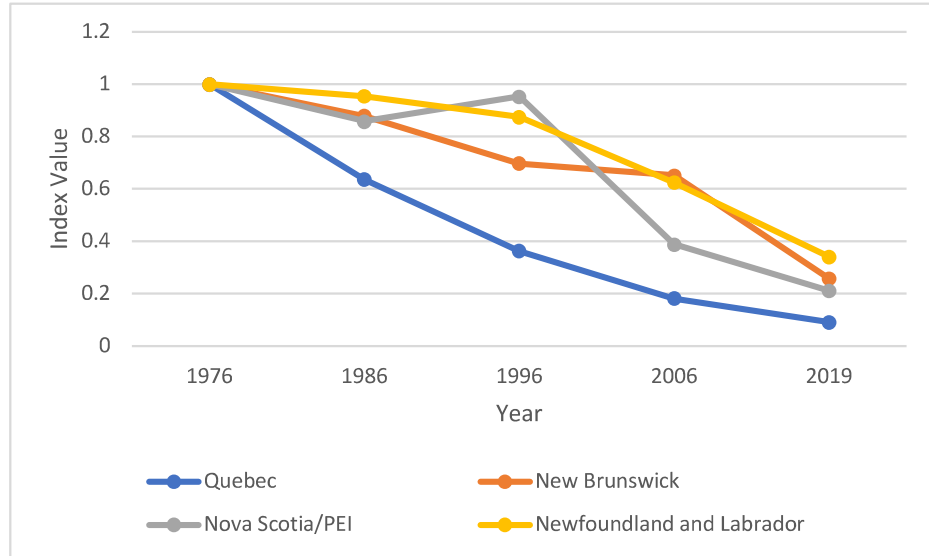
Many thanks to Charles Ferris for his support in updating this report.

Total Membership by Diocese	1976	1986	1996	2006	2019
Montreal	51,126	32,131	21,540	15,105	7,039
Quebec	14,316	10,633	8,583	3,576	4,000
Fredericton	44,864	41,329	33,833	31,032	13,629
Nova Scotia/PEI	80,289	73,429	84,151	34,854	20,000
Western Newfoundland	45,562	45,812	35,301	20,100	17,612
Central Newfoundland	40,637	34,720	33,884	21,432	9,442
Eastern Newfoundland & Labrador	60,868	62,865	58,235	41,907	20,000

Anglican Membership by Province as Percentage of Total Population

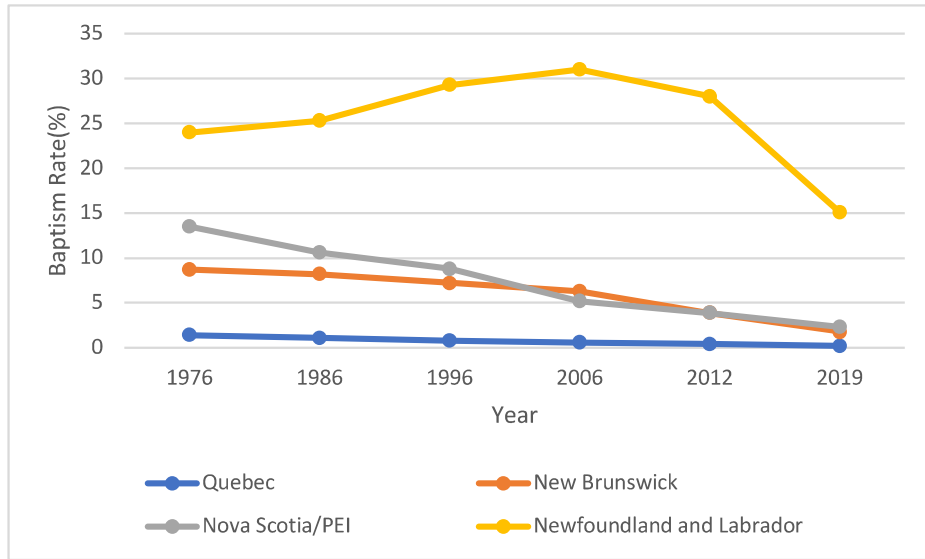


Anglican Membership Index

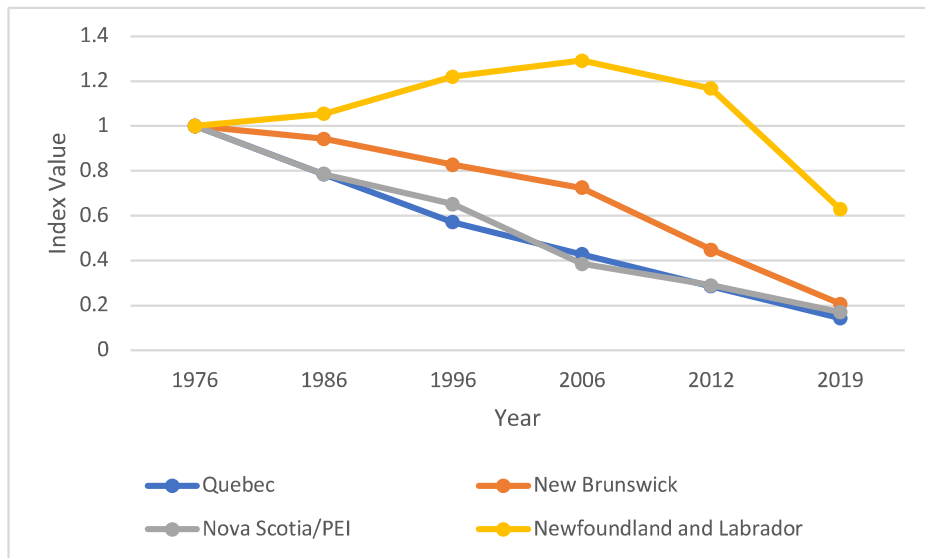


Baptisms by Diocese	1976	1986	1996	2006	2012	2019
Montreal	1079	739	577	376	263	138
Quebec	290	183	141	84	75	17
Fredericton	1027	800	585	446	275	113
Nova Scotia/PEI	1987	1511	1084	519	395	213
Western Newfoundland	832	619	495	346	334	213
Central Newfoundland	747	489	407	294	309	58
Eastern Newfoundland & Labrador	1092	941	784	769	641	295

Baptism Rate as Percentage of Live Births

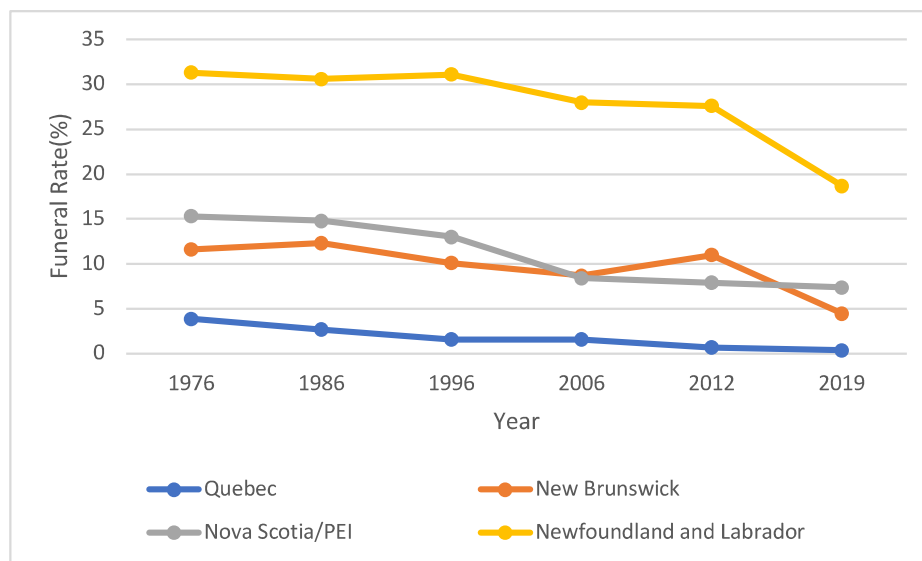


Baptism Index

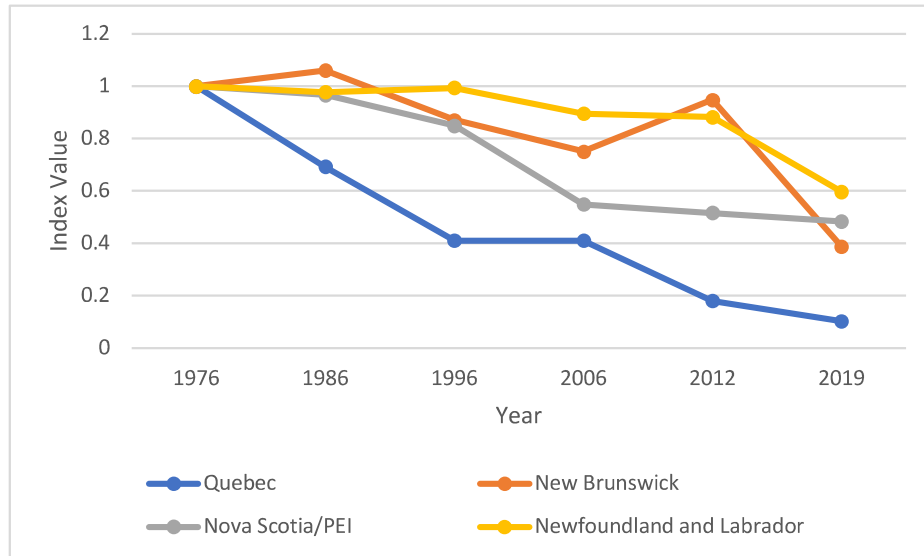


Funerals by Diocese	1976	1986	1996	2006	2012	2019
Montreal	1331	990	619	742	308	208
Quebec	335	276	227	122	93	40
Fredericton	605	670	598	521	709	353
Nova Scotia/PEI	1231	1241	1173	781	775	829
Western Newfoundland	235	328	349	348	375	402
Central Newfoundland	335	274	337	371	367	165
Eastern Newfoundland & Labrador	470	482	534	540	532	416

Funeral Rate as Percentage of Total Deaths



Funeral Index

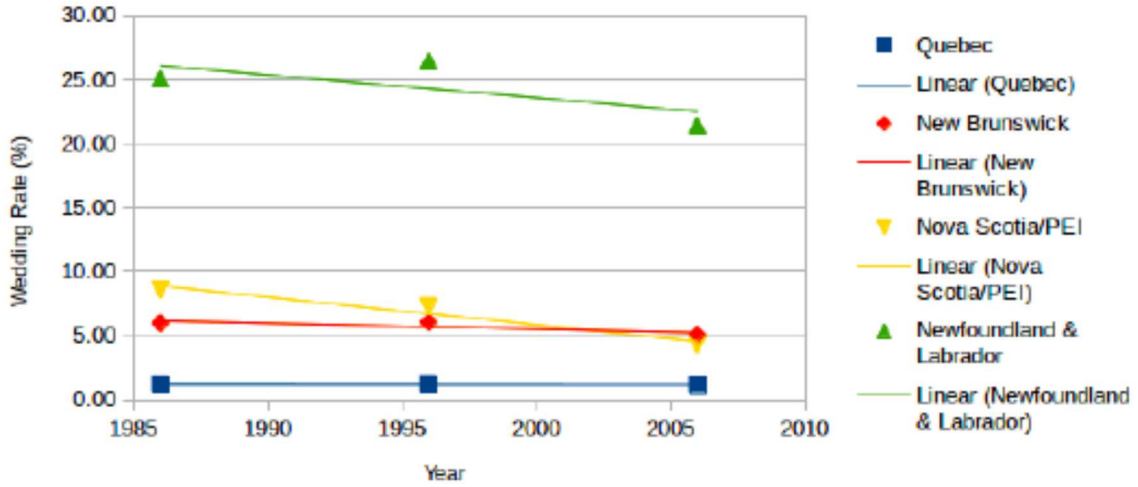


Weddings by Diocese	1976	1986	1996	2006	2012	2019
Montreal	668	342	238	223	150	56
Quebec	135	64	63	38	29	2
Fredericton	415	297	264	196	129	64
Nova Scotia/PEI	792	637	463	239	145	73
Western Newfoundland	293	254	282	169	120	61
Central Newfoundland	255	203	210	123	128	20
Eastern Newfoundland & Labrador	441	400	352	280	224	84

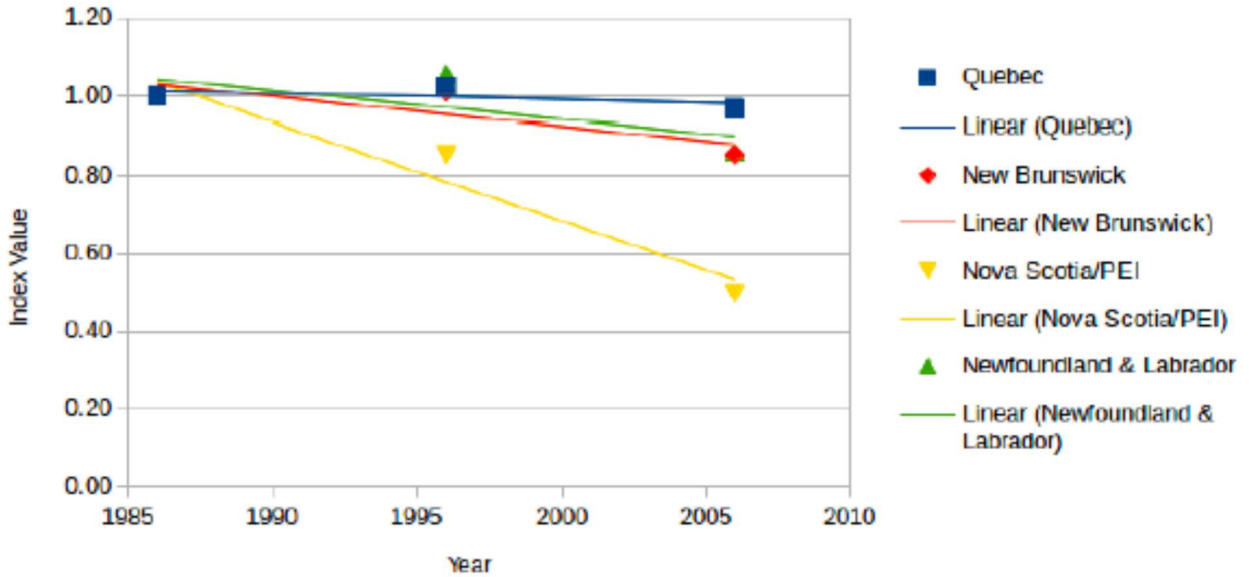
Rt. Rev. Dr. Geoff Peddle's Marriage Graphs as of 2006

Wedding Rate

As Percentage of Total Recognized Unions



Wedding Index



Provincial Statistics from Statistics Canada and Provincial Statistics Offices

Population	1976	1986	1996	2006	2012	2014	2019
Quebec	6,234,445	6,532,460	7,138,795	7,546,131	8,084,800	8,214,700	8,540,429
New Brunswick	677,250	709,445	738,133	729,997	756,800	753,900	780,154
Nova Scotia and PEI	946,795	999,815	1,043,839	1,049,313	1,090,100	1,089,000	1,133,565
Newfoundland Labrador	557,720	568,350	551,790	505,469	526,900	527,000	524,137
Live Births	1976	1986	1996	2006	2012	2014	2019
Quebec	96,342	84,634	85,226	81,939	88,311	88,250	84,172
New Brunswick	11,811	9788	8176	7030	7028	6826	6278
Nova Scotia and PEI	14,762	14,286	12,267	9898	10,154	9995	9425
Newfoundland Labrador	11,130	8100	5747	4542	4552	4455	3753
Deaths	1976	1986	1996	2006	2012	2014	2019
Quebec	43,011	46,892	52,341	54,242	58,859	60,800	66,813
New Brunswick	5203	5458	5896	6010	6466	6835	7788
Nova Scotia and PEI	8050	8376	9019	9260	19856	10,261	11,193
Newfoundland Labrador	3323	3540	3928	4493	4613	4855	5244
Marriages	1986	1996	2006	2012	2014	2019	
Quebec	33,083	23,968	21,956			22,250	
New Brunswick	4962	4366	3845			2889	
Nova Scotia and PEI	7415	6316	5596				
Newfoundland Labrador	3421	3194	2665				